

KKL2X50M

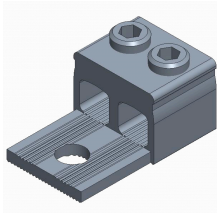
Cable Connectors

- Sales unit = 1 pc
- Suitable for Al/Cu cables
- Material: tin-coated aluminium
- IEC 61238-1 Class A
- Environmentally friendly materials

Conductors per cross section (mm²) table
>>

KKL Installation Instructions >>

Compatibility tables >>



Data subject to change without notice. Always confirm the data is correct from the seller.

Product details

SKU	KKL2X50M
Al mm²	16-50
Color	Standard
Cu mm²	16-50
E-Number	1942096
EAN	6419410378663
In (Al) (A)	200
In (Cu) (A)	320
Key size	Hex 5
Mounting	Bolt M8
Number of Conductors	2
Package size	12
Torque Al/Cu (Nm)	5 (2,5-16mm ²) / 10 (25-50mm ²)
Un (V)	690
Weight (lb/kg)	0.051 / 0.023

Dimensional drawing

